



Okemos Public Schools

2022 Bond Proposal

Steering Committee #2

January 26, 2022

TowerPinkster
Architecture · Engineering · Interiors

 **CHRISTMAN**
BUILDING SINCE 1894



Agenda

- ❑ Today's Agenda
- ❑ Facilities Assessment
- ❑ Listening Sessions
- ❑ Guiding Principles
- ❑ Wrap Up + Next Meeting

Facilities Assessment

- Overall Process
- General Observations + Themes
- Next Steps



Facilities Assessment - Process

- Site Visits: OPS, Christman + TowerPinkster
- Documentation of Existing Conditions
- Review Facility Assessment Reports
- Assign Cost Estimates to Observed Deficiencies



Facilities Assessment - Observations + Themes

- Old, Aging Infrastructure
- Site Access + Serviceability of Drop-Off / Pick-Up Layouts
- Space Capacity + Utilization Inside Buildings
- Architectural Systems
- Mechanical + Plumbing Systems



Facilities Assessment - Next Steps

- Complete Review of Site Investigation Report
- Complete Cost Modeling Effort
- Report Draft Findings at Feb 9 Steering Committee Meeting
- Utilize FA Cost Information in Discussion of Scope Development



Facilities Assessment - Discussion

- What are your thoughts about these initial findings?
- Do these findings ring true?
- What else should we consider?
- How do you expect this will influence our approach?





Agenda

- ✓ Today's Agenda
- ✓ Facilities Assessment
- ☐ Listening Sessions
- ☐ Guiding Principles
- ☐ Wrap Up + Next Meeting



Listening Sessions

- 10 Sessions - Dec 9 thru Jan 26
- Variety of Times + Locations
Including Senior Center
- Virtual + In-Person



Join us for a

LISTENING SESSION



All educators and staff are invited to an internal discussion about the vision of Okemos school facilities. As a district, we're seeking input on future facility and programming needs to improve the educational environments of our students.

Join us via Zoom (<https://bit.ly/3DmZh2p>).

Thursday, December 9

7th-12th Grade Buildings

3:00 - 4:00 pm

Pre-School-6th Grade Buildings

4:10 - 5:10 pm

Elementary Schools - Feedback Consistent



- Need Much More Space (Elementaries Are Over Capacity)
- Need Small Group Rooms, Itinerant Offices, Bathrooms
- Need New Student Furniture
- Address Traffic Flow + Car Drop Off Lines (Safety + Capacity)
- Replace Playgrounds, Casework, Carpet, Ceiling Tiles, HVAC, Lighting
- Desire Permanent Walls Between Classrooms for Acoustics



Chippewa + Kinawa Middle Schools



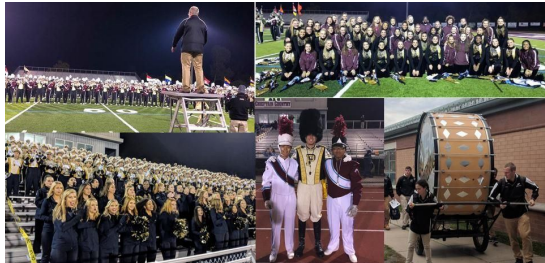
- Need New Student Furniture
- Cafeteria Not Big Enough
- Many Classrooms Without Windows
- Pool Needs to be Filled In
- Need Small Group Rooms, Itinerant Offices, Bathrooms
- Address Traffic Flow + Car Drop Off Lines (Safety + Capacity)
- Replace Playgrounds, Casework, Carpet, Ceiling Tiles, HVAC, Lighting
- Concrete Heaving, Accessibility Concerns



Okemos High School



- Need New Student Furniture
- Need Additional Pool Space (More Lanes + Diving)
- Need Larger Fine Arts Spaces (More Capacity for Band, Orchestra, Choir)
- Need Additional Athletic Spaces (Kids Practicing Until 10:00pm)
- Athletic Fields Need Drainage + Restrooms
- Tennis Court Needs to be Redone



Central Office Building + Montessori



- Need New Student Furniture
- Need Much More Space (Elementaries are Over Capacity)
- Need Small Group Rooms, Itinerant Offices, Bathrooms
- Address Traffic Flow + Car Drop Off Lines
(Safety + Capacity)
- Replace Playgrounds, Casework,
Carpet, Ceiling Tiles, HVAC, Lighting
- Need to Address Accessibility to
Board Room And Multi-Level Offices



Childcare and Senior Center



- Large Gross Motor Skills Areas
- Food / Nutrition spaces are needed
- Direct outdoor access for safety and activities
- Safe, Easy access and proximate parking



Athletics and Performing Arts



Upcoming Meetings

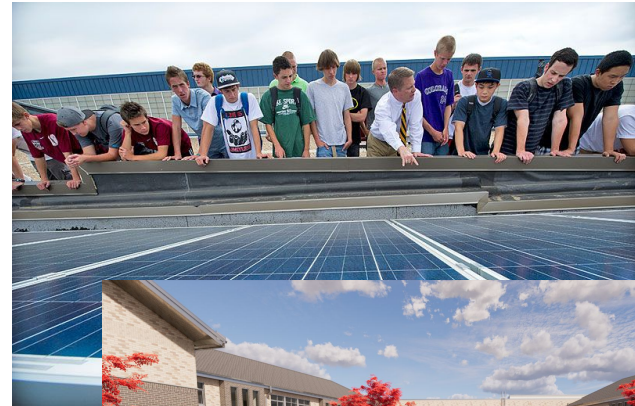
- Fall Sports
- Winter Sports
- Spring Sports
- Aquatics
- Performings Arts



Non Building Specific Themes



- Sustainability and Incorporate Energy Efficiency - Be a Leader
- Outdoor Connectivity + Daylighting
- Secure Vestibules throughout
- Health and Wellness
- DEI - Accessible and Inclusive for all



Facilities Assessment - Discussion

- What are your thoughts about the themes from the listening sessions?
- Do these reflections ring true?
- What else should we consider?
- How do you expect this will influence our approach?





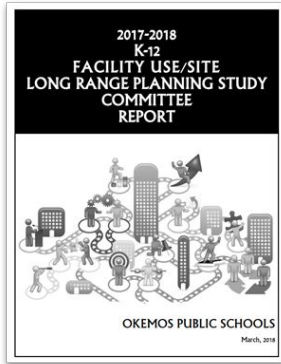
Agenda

- ✓ Today's Agenda
- ✓ Facilities Assessment
- ✓ Listening Sessions
- ☐ Guiding Principles
- ☐ Wrap Up + Next Meeting

Norms + Working Agreements



Guiding Principles + Criteria: 2018



REVISED: September, 2018

Guiding Principles

- A. Support the implementation of the OPS vision, mission, and values.
- B. Ensure student learning and achievement and the development of the whole child for the 21st Century across all of our schools.
- C. Provide excellent curriculum, relevant programs to meet current and future demands, and instructional resources for our diverse student population.
- D. Consider all possible options/solutions with courage and accountability to implement.
- E. Promote the financial stability of the district. Consider impact on our systems (world language, curriculum, etc.). Tax implications.

Criteria

- A. Promote a positive environment for learning and teaching with conscious effort to achieve equitable class size.
- B. Consider the impact of decisions on the child, family, staff and community (including, but not limited to transportation and fewest number of transitions possible).
- C. Equity for students.
- D. Allow flexibility to respond to future changes in enrollment, funding, and state/federal mandates.
- E. Provide solutions for short-term (1-4 years); long-term (5-10 years), recognizing the uncertainty of future enrollment and funding.
- F. Use reliable and multiple sources of data to drive decisions that are educationally sound.
- G. Promote optimal utilization of district buildings/facilities by the district and community.
- H. Equal opportunity/programming for all buildings.
- I. Maximize value for the dollar.

Guiding Principles + Criteria: 2022



Guiding Principles - January 2022

- A. Support the implementation of the OPS vision, mission, values and equity plan.
- B. Ensure 21st-century student learning and achievement as well as development of the whole child across all of our schools.
- C. Consider viable solutions for a 5,000 student district that allow us to maintain equitable building size, class size (number of students) and square footage per student.
- D. Maintain K-4, 5-6, 7-8, 9-12 configuration for delivery of rigorous and relevant programs to meet current and future demands and instructional resources for our diverse student population.
- E. Allow flexibility for future changes in enrollment, funding and government mandates.
- F. Promote decisions as a good steward of taxpayer dollars; ensure financial stability of the district and tax implications for the citizens of Okemos.
- G. Promote optimal utilization of school buildings/facilities for our children, families, staff and community.
- H. Maintain a commitment to listen to those who are willing to share their input and consistently and transparently share available information for data driven decisions.
- I. These guiding principles and this bond proposal will serve as the foundation of a long-term master plan for Okemos Public Schools.

These guiding principles and this bond proposal will serve as the foundation of a long-term master plan for Okemos Public Schools.



Agenda

- ✓ Today's Agenda
- ✓ Facilities Assessment
- ✓ Listening Sessions
- ✓ Guiding Principles
- ☐ Wrap Up + Next Meeting



Next Steps

Upcoming Milestones:

- Next Meeting: Feb 9, 6-7:30pm
- Monthly Updates Continue

Questions



For More Information

- www.okemosk12.net
- **John Hood**
Superintendent
john.hood@okemosk12.net
- **Rhianna Walworth**
Executive Assistant
rhianna.walworth@okemosk12.net